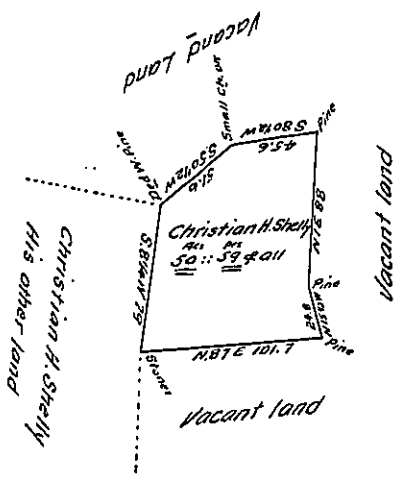


Christian H. Shelly

	Bearings	Dis.	N.	S.	E.	W.	MO.	N.	S
1	N 87° E	101.7	5.6	—	101.5	—	101 5-	568.40	
2	N 15 1/2° W	84.8	83.9	—	—	6.6	196 + 189 8	4693.96	
3	N 1° E	88.	88.3	—	1.4	—	191 2- 192 6	16882.96	
4	S 80 1/2° W	48.6	—	7.3	—	4.52	147 + 102 2		1076.02
5	S 50 1/2° W	51.6	—	32.5	—	29.8	62 + 82 6		2028.00
6	S 8 1/4° W	79.	—	78.0	—	11.3	11 3- 00 0		881.40
			117.8	117.8	102.9	102.9	22145.32		3985.42
							218159.90		
							1694		8480
							599		



Situate in West Perry Township in the County of Snyder Penn^a. Containing Fifty Acres and fifty Nine perches with the Usual allowance of Six per cents for roads &c. Surveyed The 16th day of June A.D. 1868 for Christian H. Shelly in Pursuance of his Warrant Granted to him bearing Dated The 19th day of May A.D. 1868 for 50 acres of land.

To Jacob M. Campbell Esq.

Daniel Weirick Esq. C.S.

Surveyor General of Pennsylvania

IN TESTIMONY that the above is a copy of the original remaining on file in the Department of Internal Affairs of Pennsylvania, made conformably to an Act of Assembly approved the 16th day of February, 1833, I have hereunto set my Hand and caused the Seal of said Department to be affixed at Harrisburg, this twenty-fourth day of November 1907

Henry Louck
Secretary of Internal Affairs.